

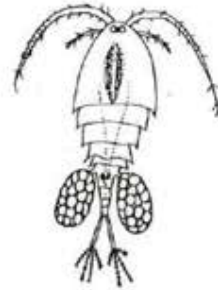
Pond Life Identification



Water mite



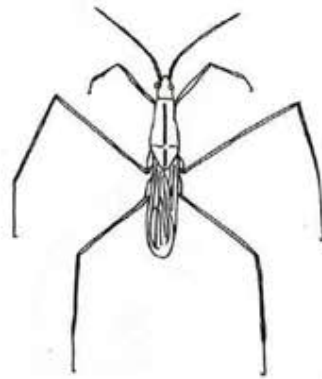
bloodworm



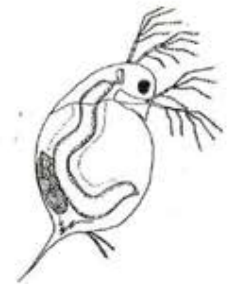
cyclops



Mosquito pupa



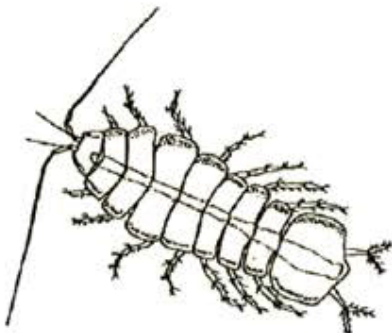
Pond skater



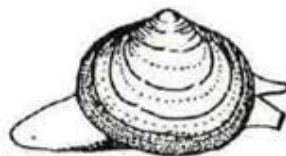
Water flea



flatworm



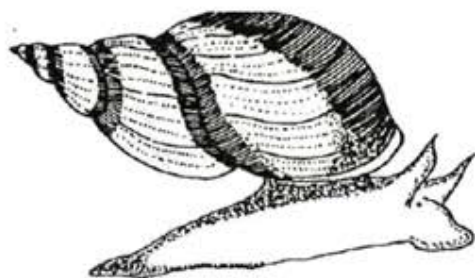
Water hoglouse



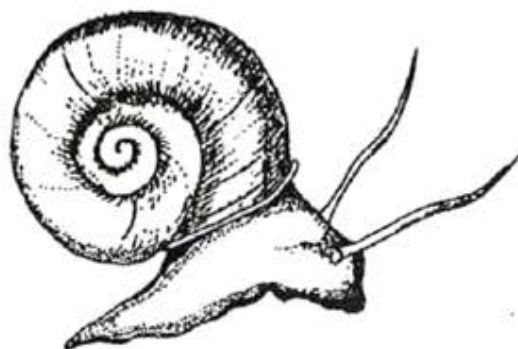
Pea mussel



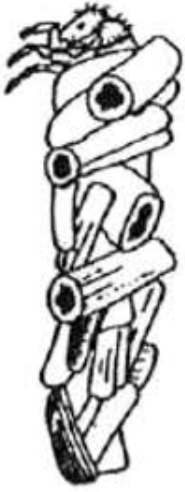
leech



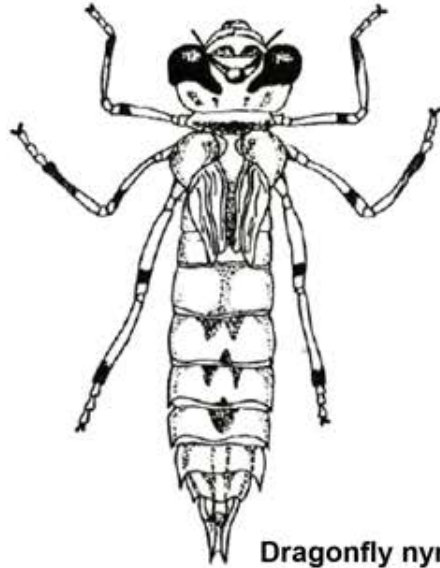
Wandering snail



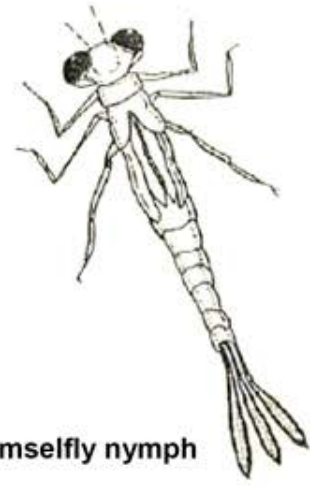
Ramshorn snail



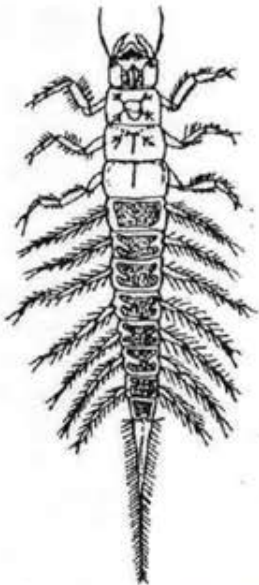
Cased caddis-fly larva



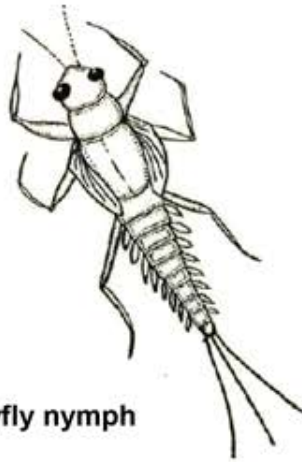
Dragonfly nymph



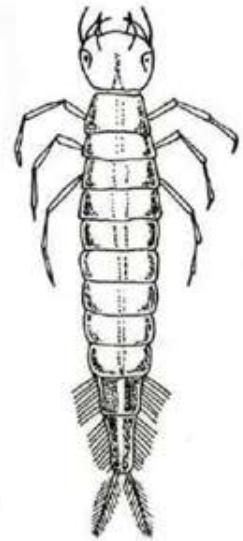
Damselfly nymph



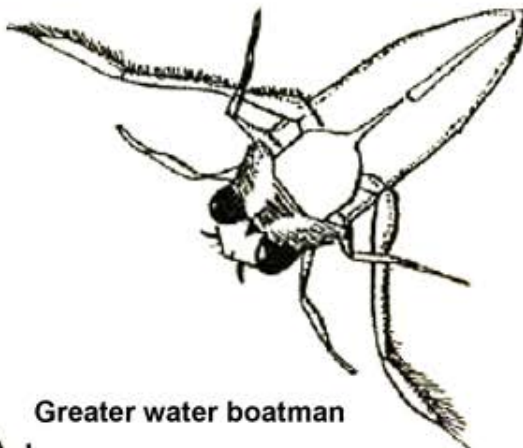
Alderfly nymph



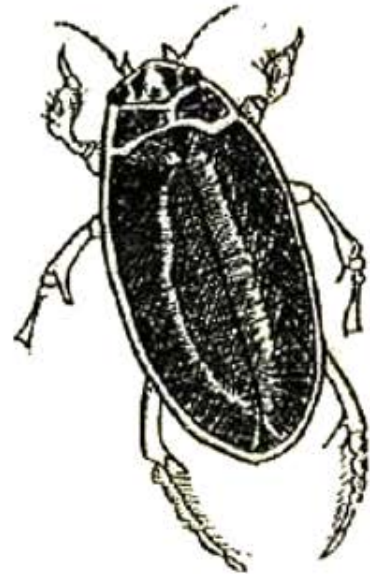
Mayfly nymph



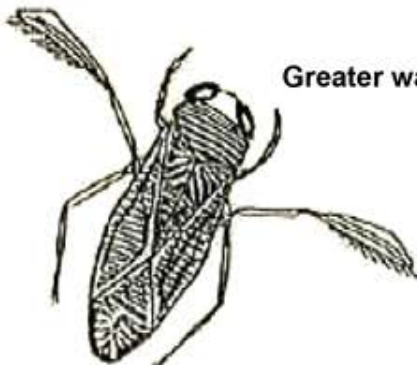
Great diving beetle larva



Greater water boatman



Great diving beetle

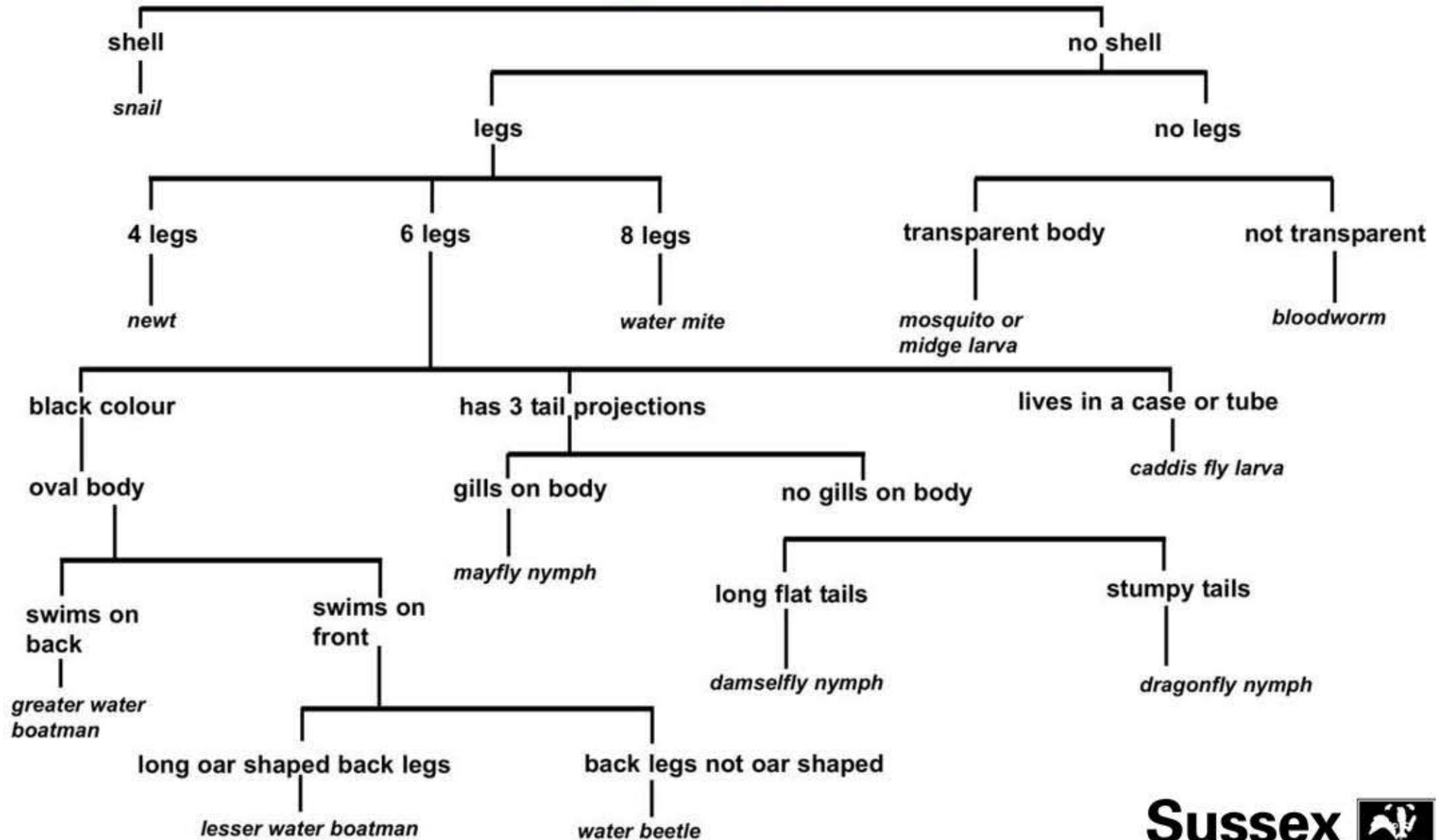


Lesser water boatman



Whirligig beetle

Pond Life Branching Key



Pond Food Web

What's for dinner?

Pond weed is eaten by

Lesser Water Boatman, Ramshorn snail, Caddis fly larva, Mayfly nymph, Rudd

Detritus is eaten by

Water flea, Lesser Water Boatman, Ramshorn snail, Mayfly nymph, Caddis fly larva

Algae is eaten by

Ramshorn snail, Water flea, Caddis fly larva, Newt tadpole, Rudd

Water flea is eaten by

Great diving beetle, Greater water boatman, Damselfly nymph, Leech, Newt tadpole, Newt

Ramshorn snail is eaten by

Great diving beetle, Leech, Newt

Lesser water boatman is eaten by

Newt tadpole, Damselfly nymph, Great diving beetle, Water mite

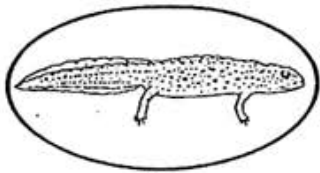
Mayfly nymph is eaten by

Greater water boatman, Damselfly nymph, Dragonfly nymph, Great diving beetle, Water mite, Newt

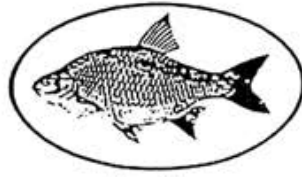
Caddis fly larva is eaten by

Great diving beetle, Leech, Greater water boatman, Newt

Pond Food Web



Newt



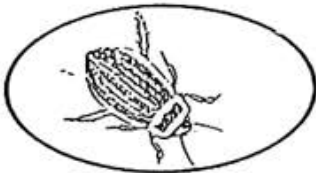
Rudd



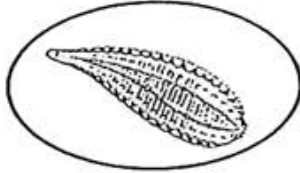
Heron



Water mite



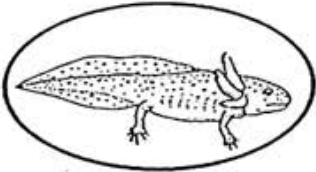
Great Diving Beetle



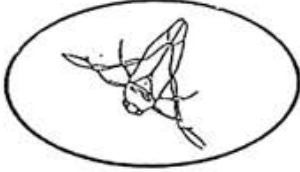
Leech



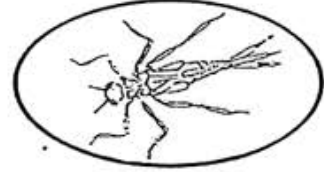
Dragonfly nymph



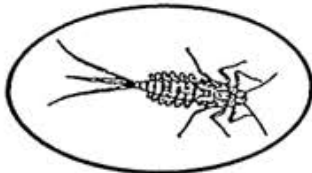
Newt tadpole



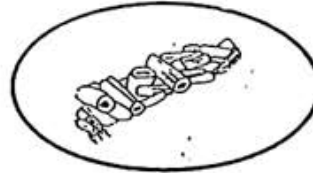
Greater Water Boatman



Damselfly nymph



Mayfly nymph



Caddis fly larva



Water flea



Ramshorn snail



Lesser Water Boatman



Pond weed



Detritus
(decaying plants & animals)



Algae

Animals & Water Quality

We can find out about the water quality of a pond or river by looking at the animals which live in it. Some animals need well oxygenated water, where as others are able to live in unclean and poorly oxygenated water.

The *Biological Monitoring Working Party* invented a system where each animal is assigned a score. Those which need clean / oxygenated water have a high score, those which can live in poor quality water have a low score. By monitoring the type of animals found, and adding the scores together, you will get a *BMWP* score for your pond which indicates the water quality.

What did you find?	Tick here	Score
Worms		1
Midge Larvae		2
Water Hoglouse		3
Water Snails		3
Leeches		3
Alderfly Larvae		4
Water Beetles		5
Water Boatman		5
Flatworms		5
Freshwater Limpets		6
Freshwater Shrimp		6
Damselfly Nymph		6
Caseless Caddis Larvae		7
Dragonfly Nymph		8
Cased Caddis Larvae		10
Stonefly Nymph		10
Mayfly Nymph		10

What does your score mean?

0 - 15 Poor

16 - 30 Moderate

31 - 60 Good

61 - 94 Excellent