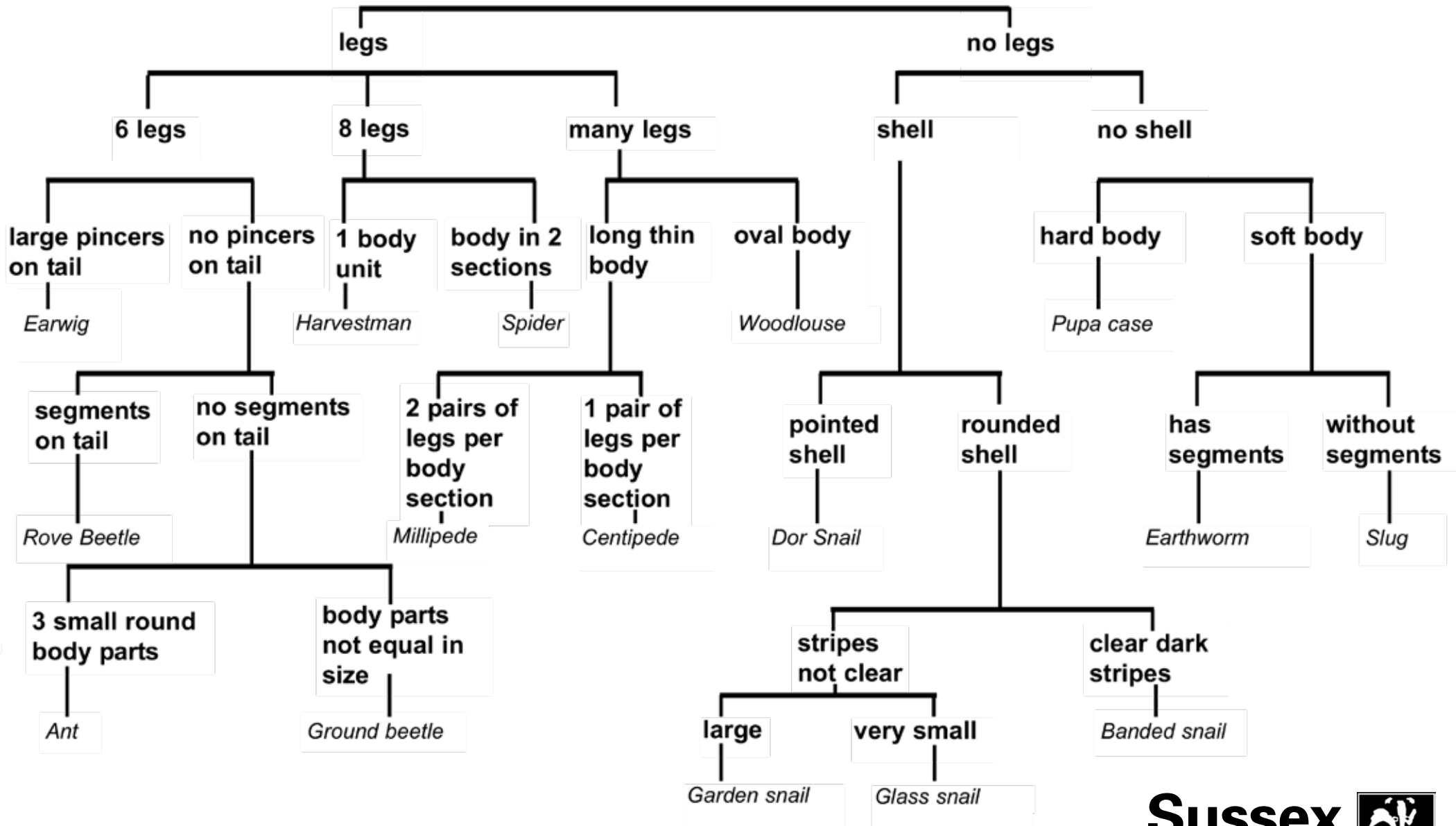


Minibeast Branching Key

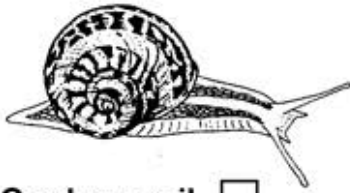


Minibeast Key

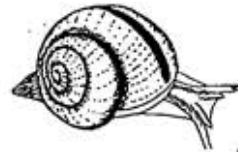
1.	Does it have legs?	Yes No	Go to 2. Go to 14.
2.	Does it have 6 legs?	Yes No	Go to 3. Go to 10.
3.	Is its body divided into segments more or less the same size?	Yes No	It is a larva of some sort. Go to 4.
4.	Does it have hard wing cases?	Yes No	Go to 5. Go to 7.
5.	Does it have a pointed nose with its antennae at the end?	Yes No	It is a weevil. Go to 6.
6.	Does it have pincers on the end of its abdomen?	Yes No	It is an earwig. It is some other sort of beetle.
7.	Does it have a pinched waist?	Yes No	It is an ant Go to 8.
8.	Is it between 1mm and 2mm long with a springing fork tucked under its abdomen?	Yes No	It is a springtail. Go to 9.
9.	Does it have only two wings?	Yes No	It is a fly of some sort, or a midge or a gnat. It is a plant bug.
10.	Does it have 8 legs?	Yes No	Go to 11. Go to 12.
11.	Is its body clearly divided into two sections?	Yes No	It is a spider. It is a mite.
12.	Is it long and thin with lots of segments?	Yes No	Go to 13. It is a woodlouse
13.	Does it have 2 pairs of legs per segment?	Yes No	It is a millipede. It is a centipede.
14.	Does it have a shell?	Yes No	It is a snail. Go to 15.
15.	Is its body divided into segments?	Yes No	Go to 16. It is a slug.
16.	Is it fairly long and worm-like with tiny bristles on its underside?	Yes No	It is a worm. It is a larva of some sort, eg. a maggot or a leatherjacket



Minibeast Identification



Garden snail



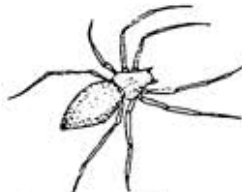
Banded snail



Slug



Harvestman



Spider



Mite



Ground beetle



Bristletail



Springtail



Beetle larva



Earwig



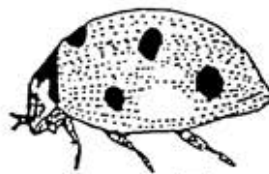
Ant



Beetle pupa



Rove beetle



Ladybird



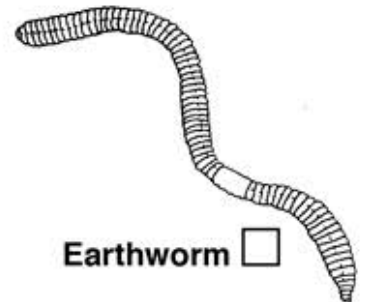
Centipede



Millipede



Woodlouse



Earthworm

Woodland Web

Draw arrow to show how the web is connected using the information below.

The first arrow is already done.



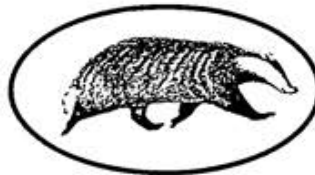
Sparrowhawk



Tawny owl



Fox



Badger



Great tit



Wood mouse



Bank vole



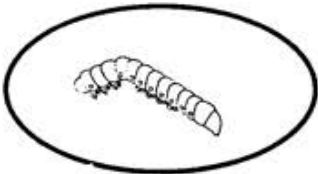
Blackbird



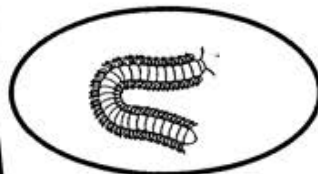
Aphid



Earthworm



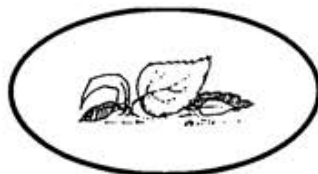
Caterpillar



Millipede



Ground beetle



Leaves



Nuts and fruits



Dead organic material



Woodland Web

What's for dinner?

Nuts and fruits are eaten by
Bank vole, Great tit, Fox, Wood mouse, Badger

Leaves are eaten by
Aphid, Caterpillar, Worm

Dead organic material is eaten by
Worm, Millipede

Caterpillar is eaten by
Great tit, Blackbird

Millipede is eaten by
Ground beetle, Blackbird, Badger

Ground beetle is eaten by
Blackbird, Badger

Aphid is eaten by
Great tit

Worm is eaten by
Blackbird, Badger

Bank vole is eaten by
Tawny owl, Badger

Blackbird is eaten by
Sparrowhawk

Great tit is eaten by
Sparrowhawk

Wood mouse is eaten by
Tawny owl, Badger

Organisms in the compost bin

Use this key to help you identify organisms that you find in the compost bin.

