

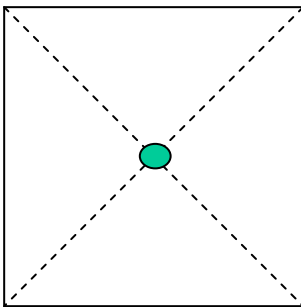


Christmas card box instructions

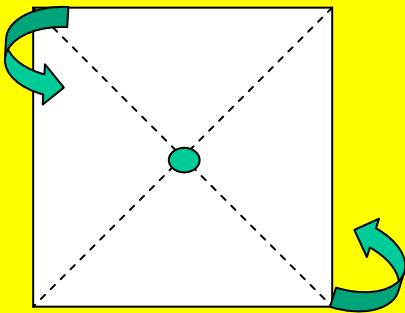


1. Collect used Christmas cards, then sort them to find the **square** ones.

2. Cut down the fold to separate the front and back of the card.

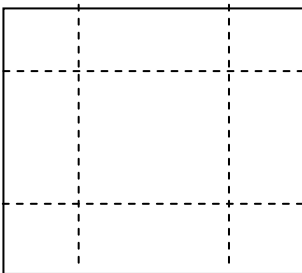


3. First use the **front** of the card. With a ruler, draw accurate diagonals to mark the centre point.

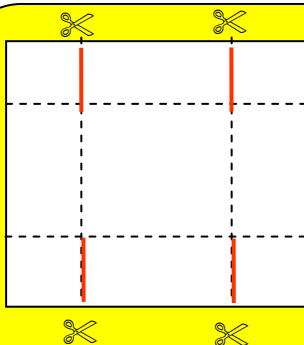


4. Carefully fold each corner into the centre point, making a smaller square.

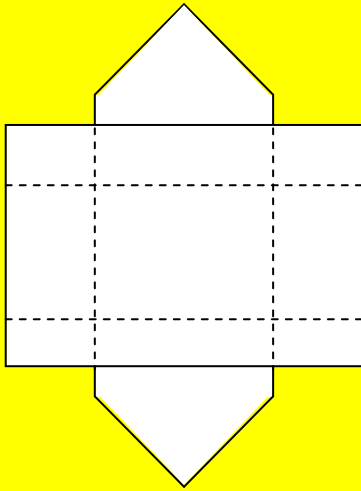
Do NOT unfold.



5. Fold each side to the centre of the square, press down on the folds and then **unfold**.

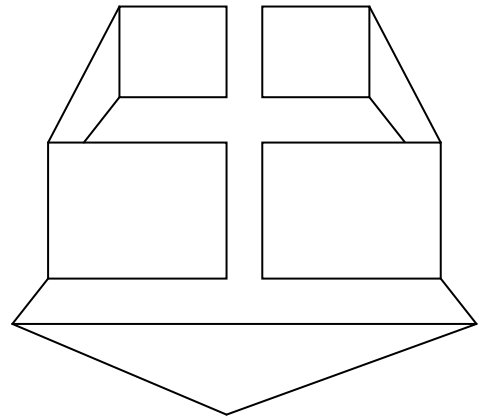


6. Cut carefully on the fold lines in the 4 places shown by the red lines.

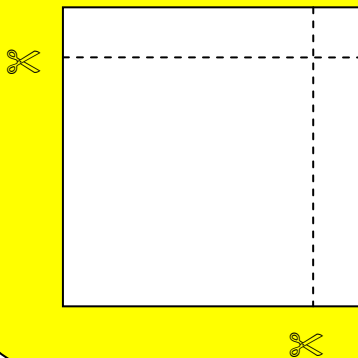


7. Open out the pointed flaps. Lift the remaining section to form box shape.

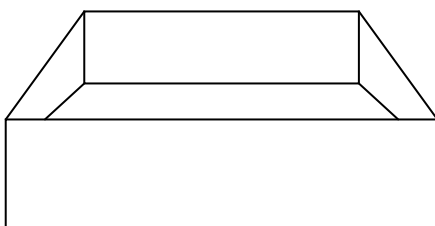
8. Lift the pointed flaps up and over the box sides and press firmly in place.



Now find the BACK of the card.



9. Cut 1cm from the top and one side. It should still be a square, but smaller than the front.



10. Repeat steps 2 to 8 to make another box, then put the top and bottom together.